

PRIME
INJE.
GLOCAL
INJE.

INJE
UNIVERSITY



Gimhae Campus

197, Inje-ro, Gimhae-si, Gyeongsangnam-do, Korea
Tel : +82 55-334-7111

Busan Campus

75, Bokji-ro, Busanjin-gu, Busan, Korea
Tel : +82 51-894-3421- 29

Educational Foundation

9, Mareunnae-ro, Jung-gu, Seoul, Korea
Tel : +82 22-270-0114

www.inje.ac.kr

仁術濟世

Save the World with
the Art of Medicine

仁德濟世

Save the World with
Benevolence and Virtue

Inje
University

1932 Taking the first step
as a pioneer

- 1932 Dr. Inje Paik, the Head of the Department of Surgery at Gyeongseong Medical College, established a surgical clinic on the site where Seoul Paik Hospital is currently located.
- December 1946 Dr. Paik donated his entire fortune to establish Seoul Paik Hospital, the first civilian nonprofit organization in Korea.
- March 1972 Seoul Paik Hospital was opened as a general hospital.
- January 1979 Dr. Nakhwan Paik and Dr. Nakjo Paik established the Inje Educational Foundation and the Inje College of Medicine. Dr. Nakjo Paik became the Chairman of the Board. Paik Medical Center was opened. Dr. Nakhwan Paik took office as the first director of the medical center.
- March 1979 Inje College of Medicine was founded. Dr. Jonghwi Jeon was appointed as the first dean of the college.
- June 1979 Busan Paik Hospital was opened.

1984 Leaping forward

- March 1984 The name of the college was changed into Inje College. The Gimhae Campus was opened.
- October 1988 Inje College was promoted to Inje University.
- March 1989 Dr. Nakhwan Paik was appointed as the first president of Inje University.
- August 1989 Sanggye Paik Hospital was opened.
- June 1999 Inje University established the Inje Character Award, commemorating the 20th anniversary of its foundation.
- December 1999 Ilsan Paik Hospital was opened.
- May 2000 Dr. Yungu Lee was appointed as the second president of Inje University.
- March 2004 Dr. Changgu Seong was appointed as the third president of Inje University.
- March 2006 Inje University was selected as a Brain Korea (BK) 21 Phase II program by the Ministry of Education.
- January 2007 Dr. Gyeongho Lee was appointed as the fourth president of Inje University.

2017 Soaring toward
a bright future

- February 2010 College of Pharmacy, the first pharmacy school in Gyeongnam, was established.
- March 2010 Haeundae Paik Hospital was opened.
- April 2010 Inje University Paik Hospital began to run a Korean hospital in Bagram, Afghanistan.
- September 2010 Dr. Wonro Lee was appointed as the fifth president of Inje University.
- August 2013 Inje University was selected for the Education Capacity Enhancement Project funded by the Ministry of Education for six years in a row.
- September 2014 Dr. Injun Cha was appointed as the sixth president of Inje University.
- January 2015 Received the Accreditation of Medical Schools for six consecutive years
- June 2015 Selected as the best institute for the Leading University for International Cooperation Program administered by the Ministry of Education
- October 2015 Selected as a leading university in the Career Development Center for the Creative Economy by the Ministry of Employment

- January 2016 Selected as a leading university for Region- and Industry-Specific Human Resources Development by the Ministry of Employment and Labor, and the Human Resources Development Service of Korea
- February 2016 Selected for the International Development Cooperation Project by the Korea International Cooperation Agency for five consecutive years
- February 2016 Selected for the Industry Professional Practice (IPP) Program by the Ministry of Employment and Labor, and the Human Resources Development Service of Korea
- May 2016 Selected for the Large-Scale Program for Industrial needs-Matched Education (PRIME) by the Ministry of Education
- December 2016 Received the University Accreditation from the Korean Council for University Education in the second year of the program
- April 2017 Selected for the Leaders in Industry-University Cooperation (LINC+) Project by the Ministry of Education

Inje University's new UI (University Identity) has the shape of the English letter "U," which is a combination of the letters "I" and "J" in Inje. "I" and "J" resemble an exclamation mark or a human, symbolizing empathy and enlightenment or a university where people meet. The UI represents the philosophy of Inje University, which emphasizes humanity, respect, and cooperation. It also symbolizes cooperation among all members including students and professors, juniors and seniors, and the university and the society. The pink color in the UI represents new energy, vitality, and passion, and the pink color symbolizes intelligence, trust, and youth. The combination of the two colors represents Inje University's beginning and hope for a better future.

INJE
UNIVERSITY

Inje University’s Key National Projects

The reliability and possibility of a university is determined by the number of national projects it has carried out. Inje University has been selected for various key national projects-such as PRIME, BK 21 Plus, and CK Project-contributing to improving the quality of education and increasing the competitiveness of students.

PRIME, A Government-Funded Program on a Whole Different Level

The Large-Scale PProgram for Industrial needs–Matched Education (PRIME) aims to enhance students’ competitiveness and to resolve mismatches between industrial needs and education by promoting universities’ voluntary reform and restructuring. Among the 193 four-year universities across the country, 9 were selected for the program. Inje was proud to be one of those nine universities. With KRW 48 billion in government funding and KRW 9.6 billion from the matching fund that the university is supposed to receive for three years until 2018, Inje University is expanding its educational environment improvement project, employment and start-up support program, and study abroad / internship / scholarship programs.

After being selected for PRIME, Inje University has created six new departments to better meet industrial needs: the Department of Biotechnology, Department of Health Care Information Technology, Department of Future Energy Engineering, Department of Design Engineering, Department of Interior Design, and Department of Multimedia. It has also improved interdisciplinary liberal education and demand-based education courses to help with students’ career development. In particular, Inje University has increased the number of students in the departments related to biomedical health care, the university’s specialized areas, and has created the College of BNIT (Bio Nano Information Technology) and related departments to maximize synergy with the existing College of Medicine, College of Pharmacy, and College of Health Care and Medicine Convergence, as well as national strategic industries.

KRW **48**Billion + KRW **9.3**Billion
PRIME Project Fund (Three Years)

The First Korean University that Became a Member of CDIO

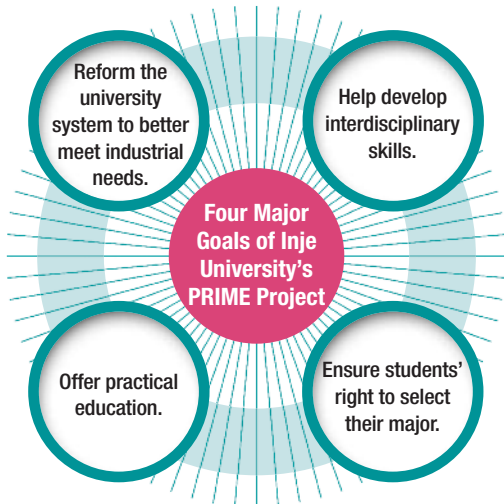
Inje University became the first Korean university accepted as a member of the CDIO (Conceive–Design–Implement–Operate) initiative, an international educational framework for producing the next generation of engineers. Inje offers practical and creative engineering education by applying the curricula of the departments created for PRIME to CDIO educational philosophy.

BK 21 Plus

Selected for BK 21 Plus, a government-funded program to support students in master’s and doctoral programs, Inje University will receive about KRW 4 billion for seven years until 2019. Three project groups (teams)-Convergence (Science and Technology), Design and Media (Humanities and Social Science), and Engineering(Applied Science)-were selected for BK 21 Plus, in an aim to enhance the competitiveness of graduate school and its research capabilities

CK Project to Enhance University Education Capacity

As a participant of the CK (Creative Korea) Project, which aims to enhance university education capacity, initiated by the Ministry of Education and the National Research Foundation of Korea, Inje University’s Department of Public Service operates “The 4th Sector + α Targeted Local Human Resources Training Program.”



A Leading University for the International Cooperation Project That Improves Global Health Care Quality

Following Pohang University of Science and Technology (POSTECH) and Ewha University, Inje University was selected by the Ministry of Education as a Leading University for International Cooperation Project. As part of the program, Inje University transformed Sri Lanka’s national nursing school to a four-year nursing university and then established the Emergency Nursing Training Program while offering Medical Information System Training. Thanks to the efforts that Inje University has put, the Sri Lankan government decided to allocate KRW 20 billion for the nursing university.

Moreover, Inje University has carried out various projects to enhance health care quality across the world. In the last seven years, it has engaged in about 40 ODA projects with funds amounting to KRW 60 billion, contributing to international cooperation. In 2015, Inje University was selected by the Korean Educational Development Institute as the best institute that actively carries out ODA projects and as the best Leading University for International Cooperation by the Ministry of Education.

LINC+ Project to Lead the Fourth Industrial Revolution

Selected for the Leaders in INdustry-University Cooperation program (LINC+) initiated by the Ministry of Education, Inje University receives up to KRW 22.5 billion for five years until 2021. As part of the program, Inje will enhance university–industry cooperation and set up a cooperation support system. In particular, Inje plans to create its own specific programs such as TULIP (Top Undergraduate LINC+ Industry Program) and other customized university-industry educational programs.



KRW **4**Billion
BK 21 Plus Fund (Seven Years)

Five Years
CK Project Support Period

No.1
2015 ODA Project Performance

KRW **16.2**Billion
LINC+ Project Fund (Five Years)

Employment and Start-Up Support Programs

Inje University is recognized as one of the best universities in terms of employment rates for graduates. It offers a wide range of employment support programs, from admission to graduation, to create skilled talents that the society needs. It ranked as a top university among local universities (Group B) in terms of employment retention rates.

* Local Talent Recommendation System
Inje produces the largest number of local talents in Gyeongnam.

Since the Local Talent Recommendation System was launched in 2005 with the aim of contributing to enhanced local representation in the public sector and to balance regional development, Inje has produced 38 local talents, more than half of the total number of local talents (71) in Gyeongnam, thus demonstrating its high employability.

65.8%

The 2016 employment rate of Inje University graduates, released by the Center for Higher Education Institutions Information Disclosure under the Korean Council for University ducation

(Number of graduates in Group B: 2,000–3,000)

91.3%

The 2016 employment retention rate of Inje University graduates, released by the Ministry of Education

(Number of graduates in Group B: 2,000–3,000)

The Secret to Excellent Employment Rates for Graduates Is Excellent Employment Support Programs

High Employment Rates for Graduates

The Korean government has recognized the excellence of Inje University's employment support and career development programs. In 2012, Inje was selected by the Ministry of Employment and Labor as one of the best universities that offer excellent employment support, and in 2013, it received the Prime Minister's Job Creation Award. In 2016, Inje achieved a high employment rate of 65.8%. It also maintains a high employment retention rate, a qualitative employment indicator, as it helps students find the right jobs.

Customized Employment Support Program designed for Students' Aptitude and Career

As Inje University believes that graduate employability represents the university's competitiveness, it offers a wide range of customized programs for students' career development and employment.

- One-on-one lifelong mentoring
- Students' career road map
- Campus life and career development
- Various curricula related to employment
- SAIL (Self-Assisting Intelligent Leader) System
- Inje Star Program
- Start-Up Support Program
- Overseas internship
- Hidden Champion Experience Program

Projects	Project Period	Funds (in KRW)
Training Program to Meet Local and Industrial Needs	2016. 01 ~ 2021. 12	12 billion
Industry Professional Practice (IPP) Project	2016. 03 ~ 2021. 02	5.8 billion
Career Development Center for a Creative Economy	2016. 09 ~ 2021. 02	3.15 billion
K-MOVE School (United States: Design, trade, and logistics; Japan: IT)	2016. 06 ~ 2017. 04	463 million
Overseas Internship for Students in Gyeongnam	2017. 03 ~ 2018. 02	20 million
National Scholarship–Employment Project	2016. 06 ~ 2017. 02	240 million
National Work–Study Scholarship Program	2016. 03 ~ 2017. 02	950 million
Hope Ladder Scholarship Program	2016. 03 ~ 2017. 02	660 million
University Students–Teenagers Mentoring Program	2016. 04 ~ 2017. 01	52 million
Multi-Cultural Family and North Korean Defector Mentoring Program	2016. 04 ~ 2017. 01	16 million
World Friends Volunteer Group	2016. 08 ~ 2017. 01	100 million
Other career and employment (start-up) support programs	2016. 03 ~ 2017. 02	680 million
Total of KRW 24.131 billion		



Start-Up: A Different Kind of Employment Create Innovative Talents Through Start-Up Training

The Start-up Training Center helps students have an adventurous spirit and innovative capabilities for different kinds of employment.

Inje University helps students develop an adventurous spirit and innovative capabilities by offering start-up training and practical start-up support programs so that they can become creative talents who will lead local and national industries.

Global Education Programs to help students communicate with the world



Korean Language & Culture Programs



Korean Language Competition



Dormitories for International Students

International Exchange and Overseas Employment Program

To produce talents who can thrive in the rapidly changing world, Inje University offers various global programs such as the International Exchange Program. Our overseas studies program and overseas internship program serve as bases for our global education, and our overseas employment network helps students grow into professional talents with a global mindset.

International Exchange Program to Help Students Thrive on the Global Stage

Inje University offers students a variety of international exchange programs, including study abroad and overseas language programs to improve their foreign language abilities and understanding of foreign cultures. Every year, scholarships are given to about 500 students enrolled in the Overseas Studies Program. Universities and research institutes in foreign countries provide students an opportunity to study and conduct their research. Inje University plans to expand exchange programs by concluding more academic exchange agreements with prominent institutes abroad.

Overseas Employment Program to Help Students Have a Hands-On Experience and Build a Global Mindset

In an effort to enhance our students' overseas employability and develop their practical skills, Inje University offers various overseas internship and overseas employment programs. As the Korean job market gets extremely competitive, these programs will provide students with a better opportunity to find a job in the global labor market.

K-MOVE School

Selected for the K-MOVE School Overseas Employment Program administered by the Human Resources Development Service of Korea, Inje University, offers grants for overseas study to students with ability and passion. It also offers professional training courses to help selected students find a job abroad.

VINA Project

The VINA Project, which is led by Inje University's Global Talent Training Center, offers job-matching services to future graduates who want to find a job overseas until they are employed as regular employees.

30 Countries

Number of Inje University's Sister Universities

483 Students

Number of Students Participating in the Overseas Studies Program in 2016



Korean Language & Culture Programs for International Students

Inje University has become a mecca of global education by offering a variety of programs to international and exchange students in an attempt to promote the excellence of Korean language and culture.

Short-term Intensive Korean Language & Culture Program

To provide the students from our exchange partners an opportunity to improve their Korean and to promote international exchanges programs, Inje University offers a "Short-term Intensive Korean Language & Culture Program" during summer vacation. The program consists of language education encompassing listening, speaking, writing, and reading as well as various activities to learn about Korean culture and traditions.

Korean Language & Culture Center

Since it was founded in 2008, the Korean Language & Culture Center at Inje University has become a leading Korean language education institute in Busan and Gyeongsangnam-do area. With a team of highly skilled and experienced instructors in Korean language education, the Korean Language & Culture Center offers the best Korean language programs for international students so that they can take another step forward as global talents. All of this in a laid-back and comfortable study environment.



* Certified by the International Education Quality Assurance System

Inje University is certified by the International Education Quality Assurance System (IEQAS), an assessment program by the Ministry of Education to certify universities with a certain level of international capacity to maintain a higher quality of education and attract outstanding international students.

Promoting Korean Language & Culture through International Exchange Programs

Since 2015, Inje University has been hosting a Korean language competition every year across the Pan Pearl River Delta region in China in collaboration with Shanghai I&C Foreign Languages School. In addition to this, Inje University has been taking the initiative to promote educational exchanges with overseas universities and to support Korean language education at overseas institutions by running a Korean language education center in collaboration with Shandong Foreign Languages Vocational College. Also, in 2017 it became a member of the Pan-PRD Delta Association for Korean Language Education.

Dormitories for International Students

To create a convenient, clean, and comfortable studying and living environment for international students, Inje University offers dormitories exclusively for foreigners equipped with heating and air-conditioning systems, laundry rooms, kitchens, a student computer room for common use, seminar rooms, and guest rooms.

Global Inje Heads toward the World While Working for the Local Community



University-Industry Cooperation

In an effort to create diverse university–local industry cooperation models, Inje University has pushed ahead with various programs designed to encourage cooperation between universities and companies or research centers, promoting the employment and start-ups of local students.

Projects in Cooperation with the Local Industry

In Gimhae, where Inje University is located, there are many manufacturing companies and specialized support centers such as the Gimhae Biomedical Center and the Fine Instruments Center. In the neighboring city of Milyang, the construction of the National Nano Convergence Industrial Complex is underway, and the Changwon Industrial Complex and the Noksan Industrial Complex are located nearby. To benefit from these environments, Inje University has established a dynamic cooperation network with companies. It is producing talented graduates through local industry-education programs. In particular, as Inje University was selected for the Large-Scale PRIME Project that offers the university KRW 48 billion, the Korean government's largest subsidy, for three years, Inje has been focusing on biomedical health care, future energy engineering, and design engineering education.

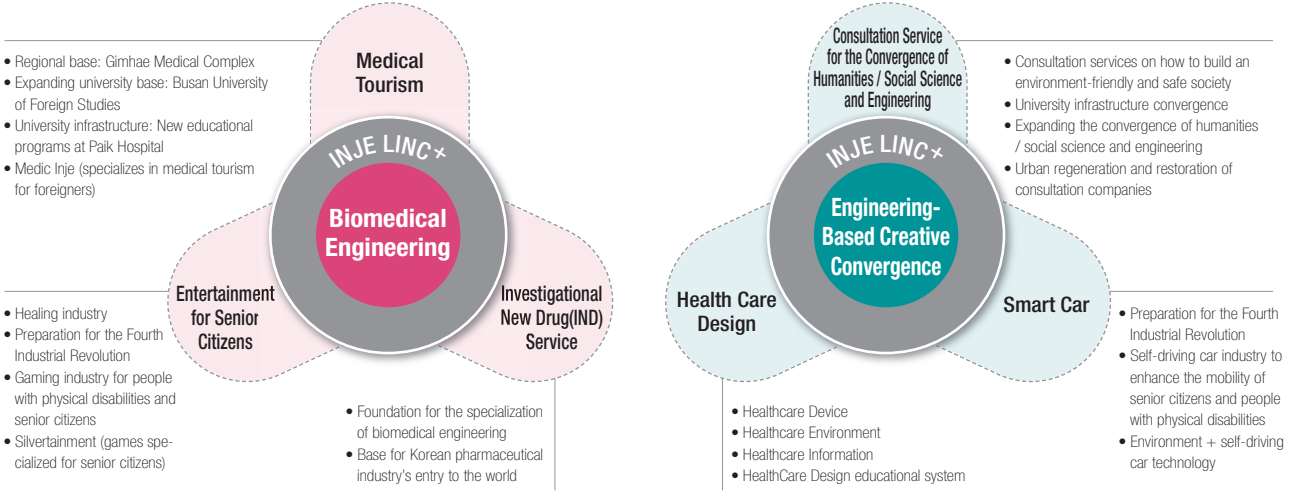
INFACO for Win-Win Growth

Inje University is pushing ahead with industry-university cooperation through INje University FAmily Company (INFACO) to strengthen cooperation between Inje and companies in Busan and Gyeongnam, thus contributing to win-win growth. In 2017, INFACO was selected as an excellent institute for industry-university cooperation by the Gyeongnam Center for Creative Economy and Innovation.

Cancer Treatment Drug Development in Cooperation with CTI

Inje University's Multiple Myeloma Center (Director: Professor Inhak Choe) and Pfizer's Centers for Therapeutic Innovation (CTI) launched a collaboration aimed at cancer treatment drug development. The two centers are making great efforts to develop medicine for cancer treatment based on Inje University's innovative research and Pfizer's drug development skills.

1,200 Companies
List of Family Companies Participating
in the Industry-academic Collaboration Program



Leaders in INdustry-University Cooperation (LINC) Project to Strengthen Practical Competence

As part of the Leaders in INdustry-University Cooperation Project, Inje University helps students learn practical skills that their future industry will need by offering them on-the-job training and start-up festivals. Inje University also provides undergraduate degree courses in Production Mechanical Engineering, Advanced Materials Science and Engineering, and Industrial and Systems Engineering to those who are already working.

Leaders in INdustry-University Cooperation Project

Selected for the Leaders in INdustry-University Cooperation (LINC+) Project, Inje University will receive a government subsidy of KRW 22.5 billion for five years (KRW 4.5 billion) until 2021. The vision of the project is "Win-Win Development of the University and Local Community," and its aim is to strengthen national competitiveness by expanding youth employment and start-ups as well as supporting small- and medium-sized companies.

Inje University plans to create six brands through the project, with the aim of establishing a sustainable and an industry-leading university. In addition, in an effort to produce forward-looking, convergence-type talents with emotional intelligence, who can meet industrial needs and respond to the Fourth Industrial Revolution, it will set up university-industry education courses based on i-Hope (Inje Humanity Oriented Professional pErson). It also pursues win-win growth with the local community. Inje University is developing cultural business contents, such as Gimhae Culture Plains and storytelling, in cooperation with the local society in order to contribute to the development of the local community.

Programs to Create Talents Who Will Lead the Local Community and Strategic Industries

In 2016, Inje University was selected as a training center for Region- and Industry-Specific Human Resources Development, a program led by the Ministry of Employment and Labor, and the Human Resources Development Service of Korea. In 2017, it received a subsidy of KRW 1.568 billion for the project. Inje University makes every effort to train company employees and Inje students to meet the needs of strategic industries.

Industry Professional Practice (IPP) to Offer On-Site Experience to Students

Inje University became the first university in Gyeongnam to be selected for Industry Professional Practice (IPP), a long-term internship program initiated by the Human Resources Development Service of Korea. The program aims to resolve mismatches between universities and companies in order to address youth unemployment. For that purpose, it offers juniors and seniors an opportunity to have on-the-job experience for a long period and learn systematic on-site training.

Excellent
Inje University's IPP Project Performance
in 2016

University for Love and Sharing That Contributes to the Society



Contribution to the Local Community / Global Volunteer Activities

Inje University provides students with character education by setting an example of contributing to the local community and engaging in volunteer activities. In addition, it has carried out various overseas volunteer programs and cooperation with developing countries.

Free Semester Project for Local Students' Career Development

As the Free Semester system for middle-school students has been fully implemented, Inje University and Paik Hospital have systematically carried out the Free Semester Project to help middle-school students improve their skills and realize their dreams.

Inje's Special Donation Café and Inje Noodles

Inje built the first donation café in Korea to help students learn how to share with others and build their character. Café visitors can donate whatever amount they could. The revenue from the sale of coffee, drinks, and cookies that have been made through talent donation is used for students. The revenue from the sale of Inje Noodles, an instant rice noodle soup made through the Inje Apple Tree Campaign, is used as scholarship fund for students.



Sri Lanka

Inje University has succeeded in establishing four-year nurse education courses for bachelor's degrees in the University of Colombo in Sri Lanka through the "Sri Lanka Nursing Degree Establishment Project" that the university has worked on for four years since 2013. In addition, Inje University is exerting efforts to reform the system of Sri Lanka's 18 national nursing colleges, improve professionals' competence, and offer the Emergency Nursing Training Program.

Laos, Cambodia

Student volunteers deployed to Laos and Cambodia teach elementary school students, restore walls and classrooms, and render a cultural performance.

Bangladesh

Selected for Eye Health Promotion and Prevention of Blindness in the Selected Areas of Bangladesh Project (to be completed by 2020), initiated by the Korea International Cooperation Agency (KOICA), Inje University offers high-quality eye health care and medical services to local residents while helping improve the capabilities of eye doctors and eye care specialists, and setting up national health care plans.

Bolivia

Funded by the Korea Foundation for International Health Care (KOFIH) from 2016 to 2017, Inje University helps Strengthening health information system of the Bolivian Municipal Holland Hospital(BMHH) project develop a medical information system for effective medical data management and convenience as well as train people for the project.

East Timor

Funded by the Korea International Cooperation Agency (KOICA) from 2015 to 2018, Inje University offers Maternal Health Improvement Program for safe childbirth and enhanced maternal health awareness. For the program, Inje University sends local specialists, supports maternal health promotion programs, trains health care specialists, provides medical equipment, and invites local specialists to Korea.

International Cooperation and Volunteering Beyond Borders

Inje University implements volunteer activities in Myanmar, Laos, Vietnam, and Cambodia, crossing borders to meet people who need help. In addition, it offers educational opportunities to local residents in the developing world. In particular, Inje is actively carrying out ODA (Official Development Assistance) projects in East Timor, Bangladesh, Mozambique, the Democratic Republic of Congo, Sri Lanka, and Bolivia, and was selected as the best leading university for international cooperation by the Ministry of Education.

Inje’s Special Student Support Programs



Student Support

Inje University offers comfortable dormitory accommodation to students from outside of the city and international students, and is pushing ahead with the construction of the “Inje Convention Center,” its long-cherished project. In addition, it offers various scholarships so that students can concentrate on their study without worrying about finances.

Comfortable Dormitory Accommodation Like Home

Inje University's residence halls for students from outside of the city can accommodate 2,064 students, and breakfast and dinner are available at affordable prices. The residence halls are fully equipped with amenities such as movie rooms and fitness centers. Inje University also has Korea's first English residence hall, “English Town.”

Spaces for Creative Thinking and Discussion

Humanities Café is a book café that houses “100 Inje liberal arts books,” Dream Lounge is a communication space where students in various majors can discuss and conduct research, and Co-Work Café is an idea development space.

Inje University provides its own online lecture program, i-MOOC (Massive Open Online Course), and offers Flipped Learning, which allows students to listen to an online lecture in advance and have discussions with professors in the classroom.



Inje Convention Center Inje University’s New Landmark

The construction of the Inje Convention Center has been Inje University's long-cherished project, and the committee for the project has been finally named. Inje University will pay attention to various opinions with regard to the construction. Once completed, the center will be used as a facility for athletic and cultural events, and will serve as Inje University's landmark.

Scholarships to Help Students Realize Their Dreams

Inje University offers students various reliable scholarships with a total value of KRW 31 billion a year. Inje University is proud that scholarship recipients make up 44.35% of all the students.

Healing in Nature Inje University / Paik University - Jeju DMC Training Center

Any Inje family can use “Inje University / Paik University -Jeju DMC Training Center,” located in Seogwipo in Jeju Island, which is famous for its beautiful natural landscapes. This center with amazing seaside views has many rooms in different sizes, a Multi-purpose Hall, a Seminar Room, a Fitness Room, and an Outdoor Fitness Center.

* Shuttle buses operate 130 times daily.

To make students' daily commute safe and convenient, 28 shuttle buses operate 130 times a day in the neighboring areas including Busan, Ulsan, Changwon, Masan, Jinhae, Yangsan, and Jangyu, and the Inje University Station of the Busan-Gimhae Light Rail Transit. Inje University's Shuttle Reservation Application, the first of its kind in Korea, makes it much easier for students to commute to and from the university.

KRW **31** billion
Yearly scholarships

Proud Inje Alumni, the Light of the World



The late Fr. John Tae-seok Lee
(from the third graduating class of
the College of Medicine)
Protagonist of the documentary film
“Don't Cry for Me, Sudan”

Inje’s Proud Alumni

Despite its relatively short history, Inje University has been producing proud graduates who help make the world better. In particular, the late Fr. John Tae-seok Lee from the third graduating class of the College of Medicine is well known as the protagonist in the documentary film “Don't Cry for Me, Sudan.” He built a school and a medical clinic in the war-ravaged remote areas of Africa, and implemented various volunteer activities. He is highly respected by both Sudanese and Koreans. There are many other Inje alumni who are carrying out various activities for social development.



Dr. Muyeol Park
(from the ninth graduating class
of the College of Medicine)
Director of Karamtola Christian
Hospital in Bangladesh



Professor Bongjae Jeon
(Department of Biomedical En-
gineering; started his under-
graduate studies in 1993)
Professor at the Cleveland Clinic
Lerner College of Medicine



CEO Eunyeong Han
(Department of Microbiology;
started her undergraduate stud-
ies in 1991)
CEO of GENEJIN TECH



CEO Seonhui Jeong
(Department of Food Science
and Biotechnology; started her
undergraduate studies in 2001)
CEO of Sulbing



Professor Gyeonghun Yun
(Department of Korean Lan-
guage and Literature; started his
undergraduate studies in 1992)
Professor at Ryutsu Keizai Uni-
versity in Japan



Professor Hwiseung Gang
(Department of English Language
and Literature; started her under-
graduate studies in 2001)
Professor at Case Western Reserve
University in the United States



CEO Yeongrae Ju
(Department of Chinese Stud-
ies; started his undergraduate
studies in 1992)
CEO of Hanyoung Trading
(Shanghai) Co., Ltd.



Lawyer Mina Lee
(Department of Law; started her
undergraduate studies in 2007)
The youngest person to pass
the bar examination.

Paik Hospital, which offers specialized and professional treatment, is a solid foundation of Inje University.

Inje University Paik Hospital

Paik Hospital, which became a foundation of Inje University, is Korea's first private hospital with an 85-year history. Based on the establishment of Paik Inje Surgical Clinic by Dr. Inje Paik, a pioneer of Korean modern medicine in 1932, Paik Hospital, the first civilian nonprofit organization in Korea, opened in 1946 with the vision, "Save the World with the Art of Medicine." Currently, the foundation has five Paik Hospitals (Seoul Paik Hospital, Busan Paik Hospital, Sanggye Paik Hospital, Ilsan Paik Hospital, and Haeundae Paik Hospital), which have a total of 3,600 sickbeds and treat 4.4 million patients (inpatients and outpatients) a year. Paik Hospital-which is equipped with state-of-the-art medical equipment and medical systems, excellent medical personnel, and Patient First administration-offers the best medical services, and has achieved great results in medical treatment, research, and education. Paik Hospital also carries out a variety of volunteer activities in areas with unmet medical needs across the world.

Seoul Paik Hospital

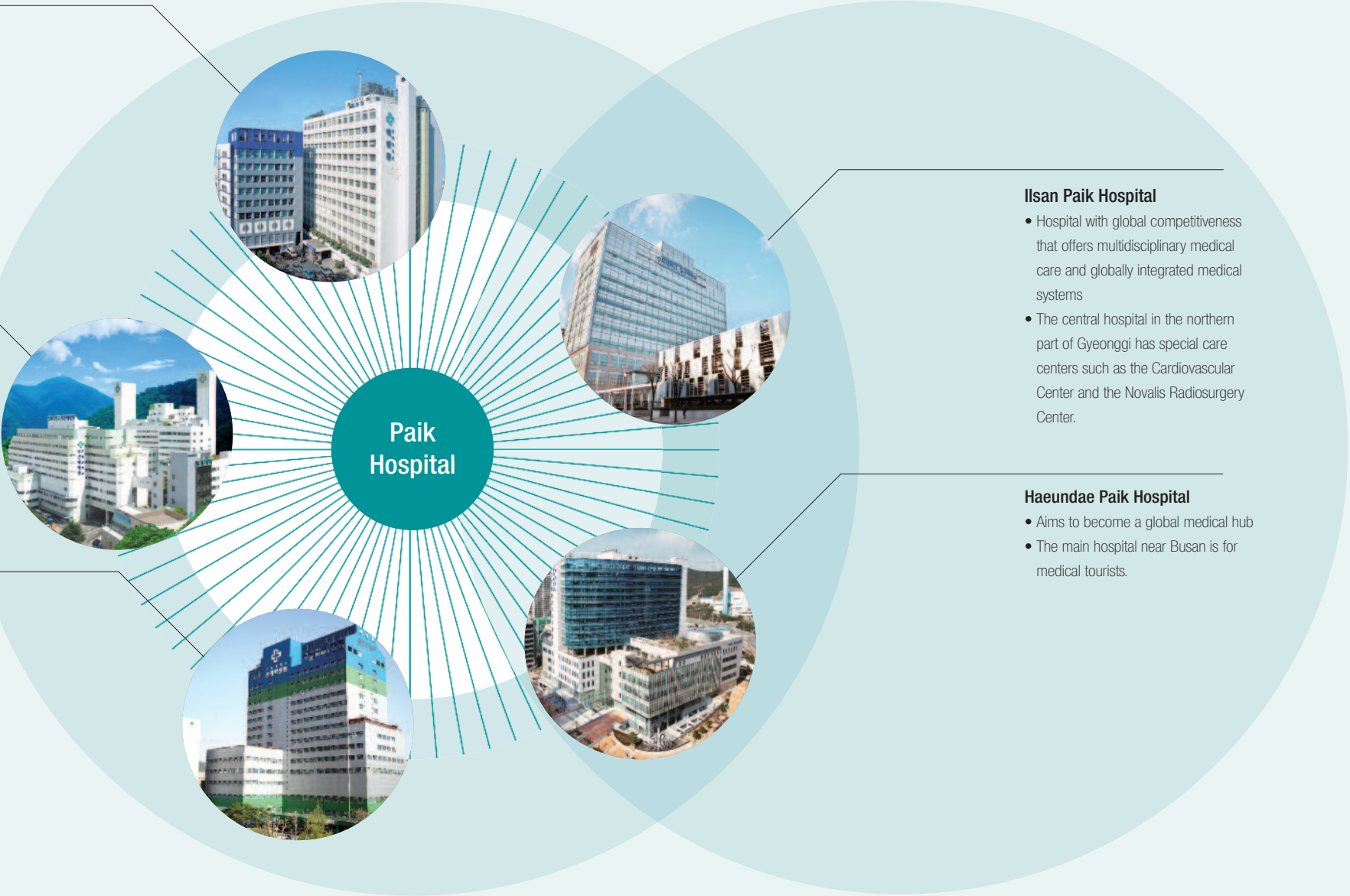
- 85-year history and reliability; specialized medical treatment
- One-stop medical center that offers treatment, examination, and results in a single day

Busan Paik Hospital

- The best medical center in Busan and Gyeongnam; focuses on research
- Performs robot-assisted surgery, specializes in high-risk pregnancies and newborns, and has a Global Clinical Trial Center and other special centers

Sanggye Paik Hospital

- Central medical center in Seoul and the northeastern part of Gyeonggi
- Reliable local hospital that offers specialized medical services



Ilsan Paik Hospital

- Hospital with global competitiveness that offers multidisciplinary medical care and globally integrated medical systems
- The central hospital in the northern part of Gyeonggi has special care centers such as the Cardiovascular Center and the Novalis Radiosurgery Center.

Haeundae Paik Hospital

- Aims to become a global medical hub
- The main hospital near Busan is for medical tourists.



High Competitiveness
University That Specializes in Medi-
cine and Biomedical Engineering

Founded in 1979, Inje University College of Medicine was selected as one of the best colleges by the Korea Institute of Medical Education and Evaluation. Inje University is a prestigious private university that specializes in medicine and biomedical engineering. Inje University graduates have achieved one of the highest passing rates on national certification examinations for medical doctors, nurses, pharmacists, occupational therapists, physical therapists, and medical laboratory technologists.

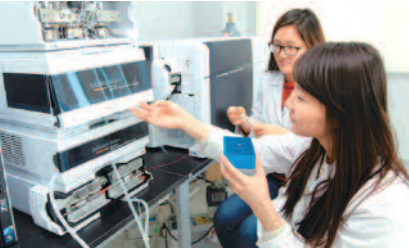
東亞日報2015. 2. 27

Inje University Boasts of High Passing Rates for Medical Certification Examinations

Recent National Examination Results

Occupational therapists	Passing rate: 93.3%
Physical therapists	All 35 students have passed.
Nurses	All 80 students have passed.
Pharmacists	All 24 students have passed.

Inje University (President: Injun Cha) draws attention as a university that has achieved excellent results for various medical certification examinations. This may be because the university has the largest number of hospitals among Korean universities.



PRIME Biomedical Engineering Center
for Biomedical Health Care Specialist
Training

The PRIME Biomedical Engineering Center, with seven floors aboveground and one floor underground, is a high-tech building for education and research. This center is equipped with laboratories, research rooms, lecture rooms, and equipment rooms. In particular, the Dream Factory on the seventh floor allows students to freely come up with ideas, have discussions, study, analyze, produce, and evaluate anything.



Produces highly talented people who have the character and knowledge that a future society needs.

College

College of Medicine

Department of Premedical Course / Department of Medicine
Department of Nursing

College of Liberal Arts and Sciences

Department of Biomedical Laboratory Science
Department of Computer Simulation
Department of Foreign Languages and Literature
Department of Humanities
Department of Sports Health Care
Department of Music
Department of Liberal Arts

College of Social Sciences

Department of Consumer and Family studies
Department of Business Administration
Department of Public Service
Department of Global Business Management
Department of Health Administration
Department of Social Welfare
Department of Counseling and Psychotherapy
Department of Mass Communication
Department of Early Childhood Education
Department of Statistics
Department of Special Education
Department of Management and Global Trade (Evening)

College of Engineering

Department of Architecture
Department of Design Engineering
Department of Multimedia
Department of Future Energy Engineering
Department of Industrial and Management Engineering

Department of Interior Design
Department of Electronic, Telecommunications, Mechanical, and Automotive Engineering
Department of Computer Engineering
Department of Civil and Urban Engineering
Department of Environmental Engineering
Industry-University Contract Departments
- Department of Mechatronics
- Department of Production Mechanical Engineering
- Department of Advanced Materials Science and Engineering
- Department of Industrial and Systems Engineering
- Department of Manufacturing and Advanced Materials Engineering

College of Biomedical Engineering

Department of Physical Therapy
Department of Health and Safety
Department of Occupational Safety and Health (Evening)
Department of Biomedical Engineering
Department of Clinical Laboratory Science (Daytime, Evening)
Department of Occupational Therapy
Department of Health Management (Evening)

College of Bio Nano Information Technology (BNIT)

Department of Nano Convergence
Department of Biotechnology and Food Science
Department of Biotechnology
Department of Pharmaceutical Engineering
Department of Health Care Information Technology

College of Pharmacy

Department of Pharmaceutical Sciences

Student-Designed Majors

Indang Global Leaders
Character Education
Unification Studies

Extended Major

Biomedical Science
Japanese Studies
Naturopathy
Police Administration
Nuclear Applied Engineering
Health Care Service Design
Global Pharmaceutical Quality Management
Global Start-Up
Medical Tourism
Cultural Content

Graduate

Graduate School
Graduate School of Public Health
Graduate School of Business
Graduate School of Education
Graduate School of Social Welfare
Graduate School of Industry Convergence

Inje University offers not only high-quality higher education but also the opportunity to study a wide range of disciplines and lay the groundwork as a leader in the future.

In-june Cha, President of Inje University

